



Heights of Winter

Te Ahu Pātiki / Mt Herbert to Mt Bradley
Saturday 13th June 2026



Dear teams,
Thank you for entering the 27th annual **Heights of Winter Rogaine**.

Peninsula and Plains Orienteers (PAPO) are delighted to welcome you. This year's course is shaping up to be something special — taking you over and around one of Canterbury's most iconic features: Te Ahu Pātiki / Mt Herbert and Mt Bradley. It's a course with plenty of bite, and we're looking forward to seeing teams test themselves against terrain that rarely gives anything away for free.

Much of the event takes place on private land, and we are deeply grateful to the landowners and their families for their generosity. In February 2026, Banks Peninsula experienced an extreme rainfall event, with up to six times the usual annual rainfall falling in just 48 hours. Slips and debris caused widespread damage to roads and infrastructure, leaving communities isolated and without power for extended periods. Recovery is still ongoing.

While we are out there, please respect the privilege of being there, especially under such circumstances. Be mindful of the land and environment: use gates wherever possible leaving them as found, cross fences carefully, and avoid unnecessarily disturbing stock. If you encounter any damage or issues, please report them to the organisers.

We also thank our event sponsors:



Also thanks to the parents and members of the Cashmere High Adventure Racing Teams who are catering for us.

Before the Event: team details & indemnity

Please print and complete the indemnity form (Appendix 3) before arriving.

Bring it to registration completed with:

- all signatures
- emergency contact details

The team contact must ensure all members have read and understood this document.

Bring it to the registration where you will find out your team number.

Biosecurity: protect the environment, protect stock

Because we are entering working farms and nature reserves, please clean gear (especially footwear and socks) before arrival to reduce the risk of transferring livestock diseases or weed seeds.

Event Location

Base Camp

Orton Bradley Park, 584 Marine Drive, Charteris Bay

Coordinates: [-43.661273, 172.706658](#)

- Park entry is included in your entry fee—drive straight in
- Follow signs and marshal instructions
- Do not park on grassed areas near Base Camp

Registration

Please arrive at the correct time:

- 12-hour event: from 7:00 am
- 6-hour event: from 9:30 am (try not to arrive before 9:00 am)

What You Receive at Registration

- Team number
- One A3 waterproof pre-marked map (1:30,000, 20 m contours) with written control descriptions (on reverse) per competitor
- Each team will receive two Navlight wrist tags. Note: for Mixed teams, one must be worn by at least one woman
- An intentions map (A4, black & white)

Optional: map will be printed on durable waterproof tearproof media but you may choose to bring your own map bag.

Safety Intentions Map

- Mark your intended route (with arrows)
- Hand in before briefing

Planning, Briefing & Start

After collecting maps, you may begin planning.

Start Times

12-hour:

- Briefing: 8:45 am
- Start: 9:00 am

6-hour:

- Briefing: 10:45 am
- Start: 11:00 am

Before briefing you must:

- Hand in intentions map
- Have NavTags activated

Important: If your tags are not activated, your results will not count.

The Event

- Travel on foot only
- Visit controls in any order
- Stay within verbal contact as a team
- Both tags must be punched at each control



For details on using the Navlight Electronic Scoring System see the Heights of Winter website: <http://how.papo.org.nz/navlight/>.

See Appendix 1 for full rules.

Finish

Late penalties:

- 10 points per minute late
- 30 minutes late = all points lost

At the finish:

- Punch finish units
- Report to finish team
- Get your score printout

Any queries → see the Controller Aaron Prince (not the finish team)

Post-Event

Dinner

- Available at Base Camp (included in your entry fee)
- Bring your own utensils (plate, mug, cutlery)
- If you have dietary requirements, fill out the “Heights of Winter 2026 Changes & Requests” form on the [HoW website](http://how.papo.org.nz) as soon as possible and we will try to meet those requirements.

Schedule

- 5:00–6:00 pm: 6-hour food
- 6:00 pm: 6-hour prizegiving
- 9:00–10:00 pm: 12-hour food
- 10:00 pm: 12-hour prizegiving

The full sequential timetable is on the Heights of Winter 2026 website:

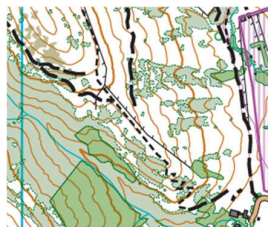
<http://how.papo.org.nz/event-timetable/>.

The Map

- A3, printed on waterproof tearproof media
- Scale 1:30,000 with 20m contours, aligned to Magnetic North.
- Elevation ranges from 1m to 919 m asl.
- The terrain is generally steep to moderately-steep pastureland, dense, rank (mostly cocksfoot) grassland and silver tussock interspersed with patches of regenerating, sometimes dense native scrub (matagouri, coprosma spp., niniao, hoheria, ribbonwood, kowhai, bushlawyer etc.), low kānuka-māhoe forest, and some spectacular examples of coastal broadleaved-podocarp forest, as well as numerous, equally spectacular patches of gorse. Plantation (pine) forestry, unique woodland agroforestry, arboretums and shelterbelts are also represented on the course.
- The map has been purpose-built using recent LiDAR and aerial imagery. Every effort has been made to accurately represent key features, particularly those important for navigation. However, this is a representation of the terrain—not a complete inventory. Features such as fences, tracks, slips, and vegetation boundaries may differ on the ground or may not be shown due to visibility limitations (e.g., under canopy) or the need to maintain map clarity.
- Four main vegetation categories are used: Open, Scrub, Bush, and Exotic Forest/Woodland. These reflect the dominant structure but given the highly variable and patchy nature of the vegetation, some generalisation has been necessary. Expect variation and interpret these categories with flexibility.
- “Scrub” represents dense, generally low (< 3 m) woody vegetation (including divaricating native shrubs and gorse). It grades into open land (mapped as white) where the density is low enough for relatively easy travel. The scrub symbol generally deserves respect.
- “Bush” includes taller vegetation such as kānuka forest, broadleaved-podocarp forest, and kōwhai-hoheria glades. Vegetation densities vary greatly. In general, expect denser understory in wetter areas (e.g., at higher elevation), on south faces and in longer-retired areas.
- “Exotic Forest / Woodland” includes exotic (pine) plantation forest, macrocarpas, eucalypts, oaks cedars, birches, alder etc. Undergrowth varies depending on grazing livestock.
- Symbols are shown in the legend.
- Areas marked as out of bounds (purple vertical hatching) include private dwellings, deer paddocks, and areas with feral cattle. Do not enter farm buildings except in an emergency. In some places you may pass through or near farmyards—please move through these areas respectfully and without delay.
- Marine Drive, Andersons Road and Purau - Port Levy Road are Out of Bounds (marked by pink X’s). These are only to be used in case of emergency; Kaituna Valley Road may be used with care.
- There will be two manned huts on the course for emergencies. Manned until 7pm.

Legend and Map Sample

	OUT OF BOUNDS
	CONTOUR, INDEX CONTOUR
	CLIFF UNCROSSABLE
	SCRUB
	BUSH
	EXOTIC FOREST / WOODLAND
	TRACK
	VEHICLE TRACK
	ROAD (UNSEALED, SEALED)
	WATER TANK
	BUILDING, FENCE
	PROMINANT TREE
	HARBOUR, STREAM, POND



Safety

Safety is a priority during this event. However, the organisers cannot guarantee your safety, and you participate at your own risk. Your responsibilities include:

- Carrying all compulsory gear.
- Always staying together as a team.
- Assist others if needed.

Safety and Hazards

Hazards to be aware of are:

- **Hypothermia:** Wind, rain, snow, and cold temperatures can quickly lead to exposure. Early symptoms are subtle (clumsiness, lethargy, slurred speech). Be prepared to put on more clothes, eat something, seek shelter or abandon your plan if conditions worsen or a team member becomes exhausted. All competitors must be equipped for winter conditions.
- **Cliffs and steep ground:** There are numerous cliffs, bluffs, and steep faces across the course. Not all cliffs are mapped. Take extreme care, particularly on steep slopes and after dark.
- **Slips and unstable ground:** Recent weather events have caused slips and erosion, including across tracks. Be prepared to detour and route-find around obstacles.
- **Streams:** Choose crossing points carefully. Streams may become uncrossable during or after rain. Do not attempt to cross swollen streams—adjust your route if needed.
- **Rough terrain:** Slopes can be slippery, and loose rock is sometimes hidden in grass. Footing can be unreliable—good footwear and careful movement are essential.
- **General debris:** Watch for hidden hazards such as rocks, holes, and loose or fallen fencing wire.
- **Fog / low cloud:** Visibility can deteriorate quickly. Use your compass and keep track of your position. If unsure, avoid climbing further into cloud—descend to regain visibility.
- **Fences:** Some fences may be electrified (assume they are live). Many can be crossed easily—prefer going through or between wires where possible. Use care with barbed wire and only climb over at solid posts. Farmers have requested that net or mesh fences are not pushed down between posts. Deer fences are present; gates are usually nearby. Please report any damage caused.
- **Scrub and vegetation:** Thick scrub and bush can be slow and difficult. If progress becomes hard, there is often a better route—don't hesitate to backtrack. Full body cover is recommended (and required as part of your gear). There are small patches of Ongaonga.
- **Livestock (cattle):** Cattle, including bulls, are present. Give stock space and avoid separating individuals from the herd. Stay calm and move steadily. If concerned, reroute to give animals a wide berth. Do not run, as this may provoke chase behaviour.
- **Pigs:** Feral pigs may be present but are rarely seen. They will usually move away if encountered. Avoid surprising animals in dense scrub, and give them space if sighted.

In an Emergency

In the event of serious injury or exhaustion, try to make the injured person warm and comfortable; arrange, if possible, to leave someone with the person; note your exact location on the map; seek help via cell phone. Emergency signal: repeated short blasts on whistle. Repeat if you hear one long blast. A First Aid Unit will be at the Start/Finish.

It is required that each team carry a cell phone for use in an emergency (note: it must not be used for navigation during the race under penalty of disqualification). There is coverage across much of the map, with best reception on the highest points. If you have no reception most modern phones will use any network or satellites for emergency calls so it's worth a go if things are bad.

There will be two manned huts on the course until 7 p.m. for emergency assistance.

For non-emergency call:

- Aaron: 027 553 2102
- Matt: 027 945 1486

If there is no response and life is in danger call 111

It is recommended each team carry a Personal Locator Beacon.

In case of becoming totally disorientated, try to follow ridges or farm tracks to lower ground.

What to bring

All competitors must be fully equipped for adverse winter conditions with full body rain cover.

Compulsory Gear List– All teams taking part in the event must wear or carry the following equipment.

Per team member

- Compass
- Whistle
- Thermal top in addition to whatever you start off wearing (e.g. polypropylene, merino)
- Mid-layer top, i.e. fleece top
- Thermal bottom (e.g., polypropylene, merino)
- Waterproof jacket
- Hat and gloves.
- Water and food (e.g. lollies, muesli bar, other snack foods)
- Survival blanket or pack liner
- Headlamp/torch with new batteries (including 6-hour team members)
- Backpack to carry above
- Suitable, robust, well-fitting footwear.

Per team

- Watch
- First aid kit
- Cell phone

Suggested Additional Gear– Participants may also wish to consider having and/or carrying the following:

- Highlighter to plan and mark your route.
- Pencil or pen to record codes if there are faulty controls.
- Gaiters, tights or similar lower body protection clothing.
- Waterproof leggings.
- Walking poles.
- Personal Locator Beacon
- UV or chlorine water treatment, if you wish to drink water from streams.

The organisers reserve the right to check your equipment and decline to allow you to start if it is considered you are not suitably equipped.

Food and drink

Carry enough for a long day in the field. You may return to the Start at any time during the event to finish or rest. Post-event food will be available at Base Camp where you registered.

There will be 4 water refill stations as marked on the map. If you choose to refill from one of the many creeks, filtration, UV treatment or chlorine tablets or drops are recommended. Streams in headwaters with native bush catchments are likely to be more suitable for drinking. Do not tamper with farm tanks or pipes.

First Aid

A Doctor will be on duty at the Start/Finish in the morning, then Land Search & Rescue medics until 9:30pm

Other useful information

- Sunset will be at approximately 5:00 pm.
- There will be no moon as it rises at 5:31 am! (Make sure headtorches are fully charged!)

Cancellation

This event will only be cancelled if conditions are extreme. If cancellation is made before the day this will be posted on the PAPO website www.papo.org.nz otherwise such will be notified at the start. The organisers reserve the right to shorten the event for safety or other reasons.

Any queries, including advice to beginners, to: Aaron Prince 027 553 2102 (controller) or Viv Prince 021 206 8457 (organiser)

Appendix 1: Rules in brief

Rules in brief

- Use the rogaine event map and compass only. GPS or altimeters are not permitted. Although we require teams to take a cell phone with them, use of the cell phone for navigation purposes is not allowed and teams caught doing this will be disqualified.
- Travel only on foot.
- Your team may visit any number of controls and in any order.
- Team members are to stay within verbal contact of each other at all times. All members must approach within 20 metres of each checkpoint. (Your fellow competitors will be watching)
- If in the unlikely event that a control is missing be able to describe the local setting or take a photo.
- If a competitor wishes to withdraw, the entire team must return to START/FINISH and notify organisers. (Team retains current points score.) Teams of one are not permitted.
- 12-hour event finishes at 9.00 pm; 6-hour event finishes at 5.00 pm (regardless of actual start time); or as specified at start.
- When your team finishes, all members must be together when the finish punches are tagged.

Procedure at each control

- Each control comprises an orange and white flag and a coded punch with control number
- Insert the Navlight Punch onto your Navlight wrist Tag – When punching is completed (about 1 second) a red light flashes.
- If you don't see a light flash it is ok to repeat the punching. After repeated attempts and you still haven't seen any red lights you should record the three-letter code on the inside of the punch.
- Both team tags must be punched at EVERY control and within roughly 30 seconds of each other.

Points value, penalty points, protest

- Points 20-29 are worth 20 points, points 30-39 are worth 30, etc., with 100-103 worth 100 points – this information will also be on the back of your map
- 10 points penalty for each minute late. 30 minutes late - all points lost
- Protests to the event controller within 15 minutes of finishing and no later than 5:30 pm (6-hour rogaine) or 9.30 pm (12-hour rogaine).

Appendix 2: Environmental and farm care

- Clean your gear before and after the rogaine.
- Keep clear of buildings, machinery.
- Gates to be left as found - usually closed. If your team opens a gate, then your team closes it.
- Cross fences with care - through wires (some will be electric), cross at a post.
- Please climb over gates at the hinged end.
- Don't crowd stock or trample crops.
- Out of bounds means OUT OF BOUNDS.
- No **rubbish**, no dogs, no firearms. Dogs are not allowed at all.
- Report any damage, distress to stock, etc. to event organisers.
- All Human Waste must be buried. There will be toilets at the Start/Finish.
- No smoking.

Appendix 3 **Heights of Winter Indemnity Form**

Saturday 13th June 2026

Please enter your team number here:

Each team member is to fill in and sign. Designated team member to hand form in at registration on Saturday 13th June 2026.

Neither Peninsula and Plains Orienteers nor the landowners accept liability for any accident or injury to participants during the event. Competitors agree to abide by the rules as set out in the event information and compete at their own risk.

Name	Signature	Date

Emergency Contact

Your name and Vehicle Registration Number (parked at this event)	Emergency Contact (not a competitor) Name, Address, Phone No.	Allergies or Medical Condition

NOTE:

1. A parent or guardian must sign the indemnity form on behalf of a competitor under the age of 18.
2. Supply the name, address and telephone number of a person to contact in the event of an emergency. This person must not be a competitor in the event.
3. Supply details of any medical conditions or allergies that might be of assistance to First Aid staff in the event of an accident or emergency.